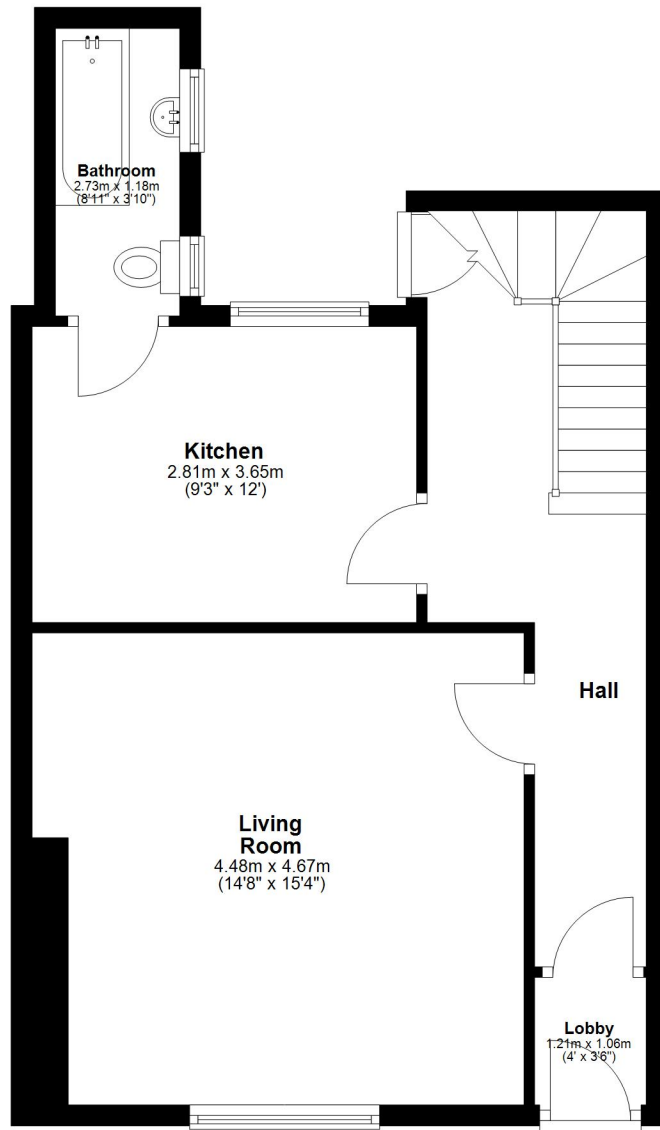


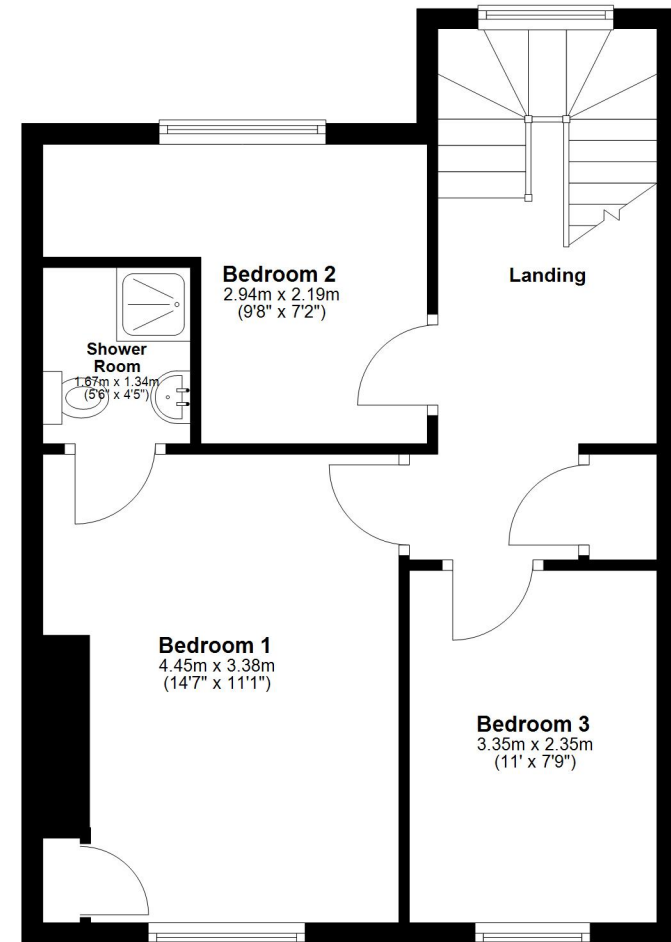
## Ground Floor

Approx. 48.7 sq. metres (524.1 sq. feet)



## First Floor

Approx. 45.5 sq. metres (489.4 sq. feet)

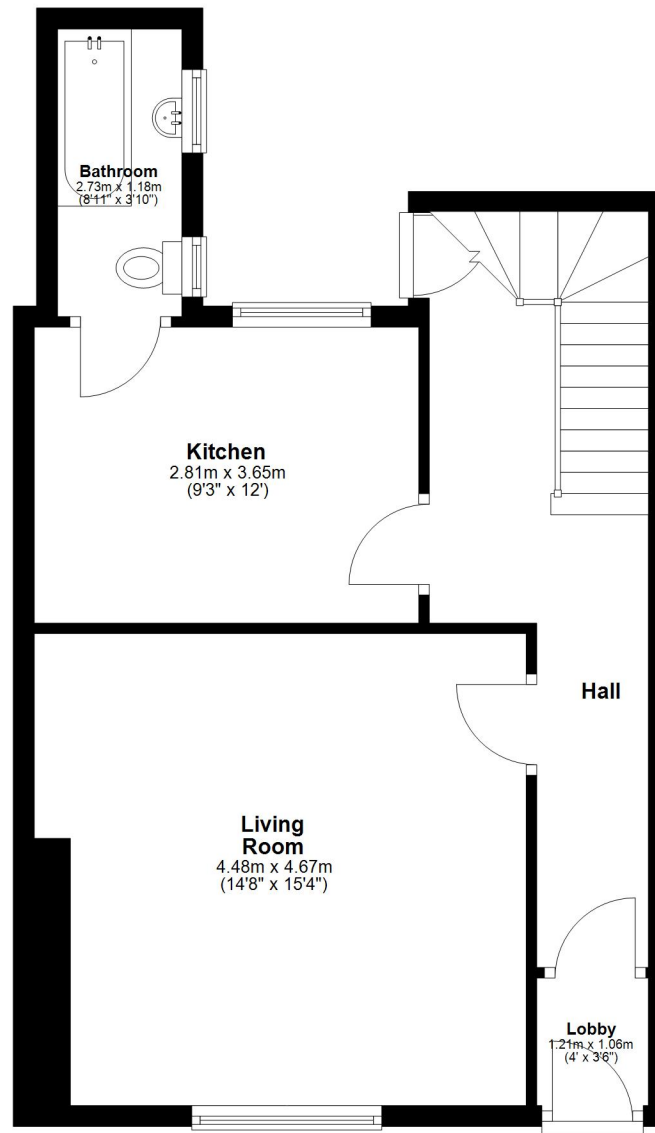


Total area: approx. 94.2 sq. metres (1013.4 sq. feet)

Whilst every attempt has been made to ensure the accuracy of the floor plan contained here, measurements of doors, windows, rooms and any other items are approximate and no responsibility is taken for any error, omission, or mis-statement. The Plan is for illustrative purposes only. Version 1

## Ground Floor

Approx. 48.7 sq. metres (524.1 sq. feet)



Total area: approx. 94.2 sq. metres (1013.4 sq. feet)

Whilst every attempt has been made to ensure the accuracy of the floor plan contained here, measurements of doors, windows, rooms and any other items are approximate and no responsibility is taken for any error, omission, or mis-statement. The Plan is for illustrative purposes only. Version 1

Plan produced using PlanUp.

**60 Old Durham Road**

## First Floor

Approx. 45.5 sq. metres (489.4 sq. feet)

